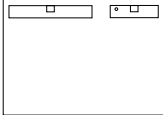


GEBRAUCHSANLEITUNG

D

EINSPEISUNG + NETZTEIL MATTER 195 MICRO

ART.-NO. 600055



TECHNISCHE DATEN

Spannung: 230VAC
 Leistung: 2x100W

Schutzklasse:



⚠ ALLGEMEINE SICHERHEITSHINWEISE ⚠

Nur autorisiertes Fachpersonal darf die Montage und Inbetriebnahme des Leuchtensystems unter Berücksichtigung dieser Montageanleitung, Sicherheitshinweise und aller für den jeweiligen Anwendungsbereich geltenden Normen und Vorschriften durchführen. Der Hersteller übernimmt keine Haftung für Schäden, die durch unsachgemäße Montage oder Inbetriebnahme entstehen.

Der vorgesehene Anwendungsbereich und die Montageart des Leuchtensystems muss entsprechend den Vorgaben eingehalten werden. Nach erfolgter Montage ist die sichere Befestigung der Leuchtensystems zu überprüfen.

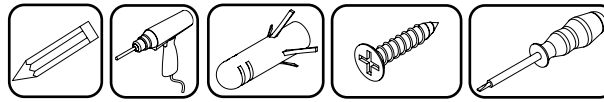
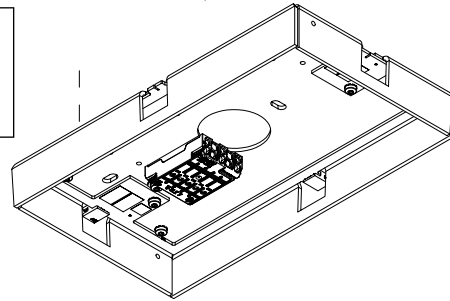
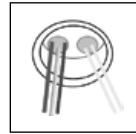
Vor jedem Wechsel der Leuchten und vor allen sonstigen Arbeiten an der Leuchte (z.B. Reinigung) ist die Netzspannung abzuschalten.

Für die Reinigung der Leuchte/n kann ein weiches Tuch (z.B. Microfasertuch) verwendet werden. Während der Arbeiten an der Leuchte unbedingt eine direkte Berührung der LED-Lichtaustrittsfläche vermeiden.

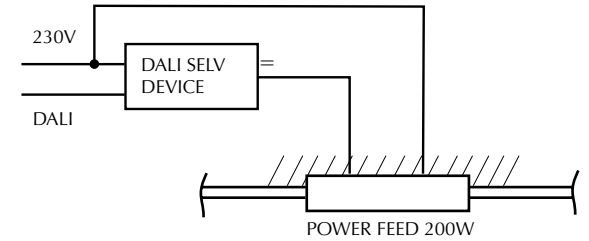
Bei nachträglichen Änderungen oder Umbauten an der Leuchte übernimmt die Bruck GmbH & Co. KG keine Haftung auf das Produkt und führt zum Verlust des Gewährleistungsanspruchs gegenüber dem Hersteller. Die Bruck GmbH & Co. KG übernimmt keinerlei Haftung für eventuelle Irrtümer oder Druckfehler. Wir behalten uns vor, jederzeit Änderungen an unseren Produkten vorzunehmen. Aktuelle Daten stellen wir jederzeit unter www.bruck.de zur Verfügung. Diese Montageanleitung für Wartungsarbeiten gut aufbewahren!



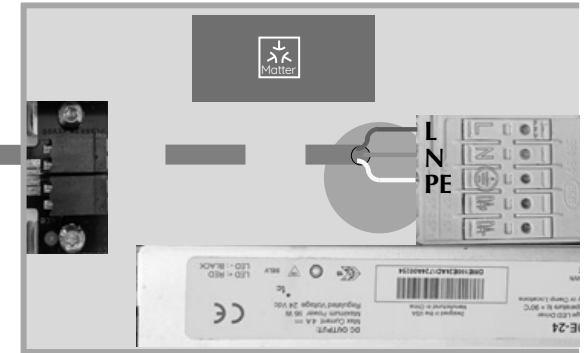
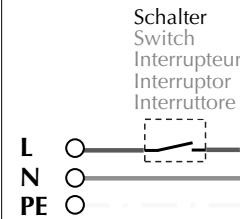
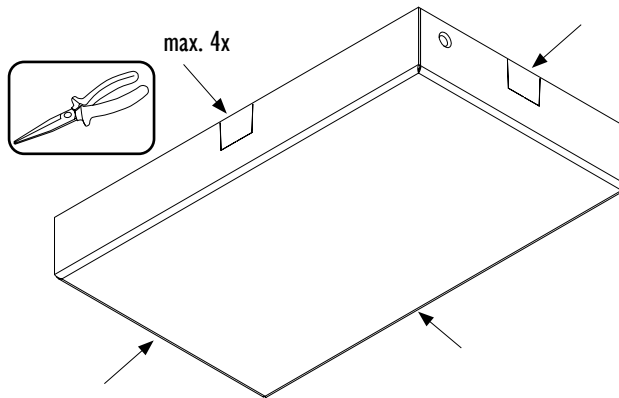
1.



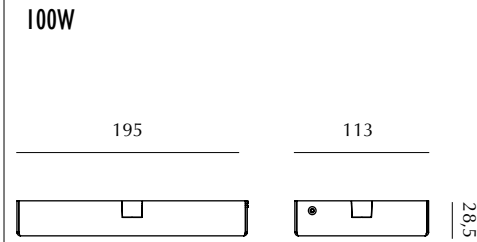
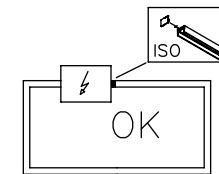
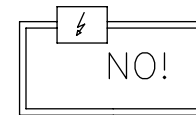
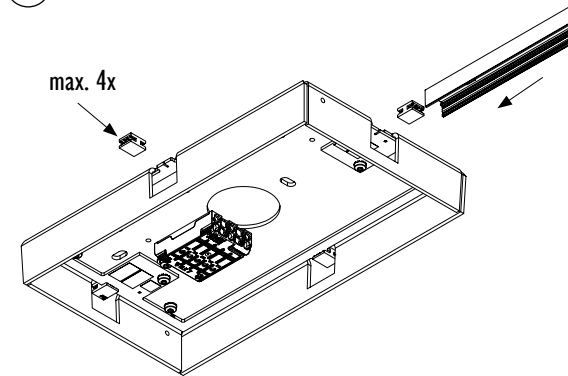
2.



3.



4.



INSTRUCTION MANUAL

GB

POWER FEED + POWER SUPPLY
MATTER 195 MICRO

ART.-NO. 600055



TECHNICAL DATA

Voltage: 230VAC
Power: 2x100W

Protection Class:



GENERAL REMARKS ON SAFETY



Only authorised specialist personnel may install and commission the lighting system, taking into account these installation instructions, safety instructions and all standards and regulations applicable to the respective area of application. The manufacturer accepts no liability for damage caused by improper installation or commissioning. The intended area of application and the type of installation of the lighting system must be observed in accordance with the specifications. After installation, check that the luminaire system is securely fastened. Always switch off the mains voltage before changing the luminaires and before carrying out any other work on the luminaire (e.g. cleaning). A soft cloth (e.g. microfibre cloth) can be used to clean the luminaire(s). Avoid direct contact with the LED light-emitting surface while working on the light. In the event of subsequent modifications or conversions to the light, Bruck GmbH & Co. KG accepts no liability for the product and will result in the loss of the warranty claim against the manufacturer. Bruck GmbH & Co. KG accepts no liability for any errors or misprints. We reserve the right to make changes to our products at any time. We make current data available at any time at www.bruck.de. Keep these installation instructions in a safe place for maintenance work!



MODE D'EMPLOI

F

ALIMENTATION + PIECE RÉSEAU
MATTER 195 MICRO

REF. 600055



CARACTERISTIQUES TECHNIQUES

Voltage: 230VAC
Puissance: 2x100W

Classe de protection:



CONSIGNES DE SECURITE GENERALES



Seul le personnel spécialisé autorisé est habilité à effectuer le montage et la mise en service du système d'éclairage en tenant compte de ces instructions de montage, des consignes de sécurité et de toutes les normes et prescriptions en vigueur pour le domaine d'application concerné. Le fabricant décline toute responsabilité pour les dommages résultant d'un montage ou d'une mise en service non conforme. Le domaine d'application prévu et le type de montage du système de luminaires doivent être respectés conformément aux instructions. Une fois le montage terminé, il convient de vérifier que le système de luminaires est bien fixé. Avant tout changement de luminaire et avant toute autre intervention sur le luminaire (par ex. nettoyage), la tension secteur doit être coupée. Pour le nettoyage du/des luminaire(s), on peut utiliser un chiffon doux (par exemple un chiffon en microfibras). Pendant les travaux sur le luminaire, éviter impérativement tout contact direct avec la surface de sortie de la lumière des LED. En cas de modifications ou de transformations ultérieures du luminaire, Bruck GmbH & Co. KG n'assume aucune responsabilité sur le produit et entraîne la perte de droit à la garantie vis-à-vis du fabricant. La société Bruck GmbH & Co. KG n'assume aucune responsabilité pour d'éventuelles erreurs ou fautes d'impression. Nous nous réservons le droit de procéder à tout moment à des modifications de nos produits. Nous mettons à tout moment les données actuelles à disposition sur www.bruck.de. Conserver soigneusement ces instructions de montage pour les travaux de maintenance !



INSTRUCCIONES DE EMPLEO

E

POWER FEED + FUENTE DE
ALIMENTACIÓN MATTER 195 MICRO

REF. 600055



DATOS TECNICOS

Voltage: 230VAC
Potencia: 2x100W

Clase de protección:



INDICACIONES GENERALES DE SEGURIDAD



La instalación y la puesta en servicio del sistema de iluminación sólo podrán ser realizadas por personal especializado autorizado, teniendo en cuenta las presentes instrucciones de instalación, las instrucciones de seguridad y todas las normas y reglamentos aplicables al respectivo ámbito de aplicación. El fabricante no se hace responsable de los daños causados por una instalación o puesta en servicio inadecuadas. El ámbito de aplicación previsto y el tipo de instalación del sistema de alumbrado deben respetarse de acuerdo con las especificaciones. Tras la instalación, compruebe que el sistema de luminarias está bien sujeto. Desconecte siempre la tensión de red antes de cambiar las luminarias y antes de realizar cualquier otro trabajo en la luminaria (por ejemplo, limpieza). Para limpiar la(s) luminaria(s) puede utilizarse un paño suave (por ejemplo, de microfibra). Evite el contacto directo con la superficie emisora de luz LED mientras trabaja en la luminaria. En caso de modificaciones o transformaciones posteriores de la luminaria, Bruck GmbH & Co. KG no asumirá ninguna responsabilidad por el producto y se perderá el derecho de garantía frente al fabricante. Bruck GmbH & Co. KG no asume ninguna responsabilidad por errores o erratas. Nos reservamos el derecho a realizar cambios en nuestros productos en cualquier momento. Ponemos a su disposición datos actuales en cualquier momento en www.bruck.de. Guarde estas instrucciones de montaje en un lugar seguro para los trabajos de mantenimiento.

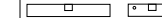


ISTRUZIONI PER L'USO

I

POWER FEED + ALIMENTATORE
MATTER 195 MICRO

COD. 600055



DATI TECNICI

Tensione: 230VAC
Wattaggio: 2x100W

Tipo di protezione:



AVVERTENZE GENERALI PER LA SICUREZZA

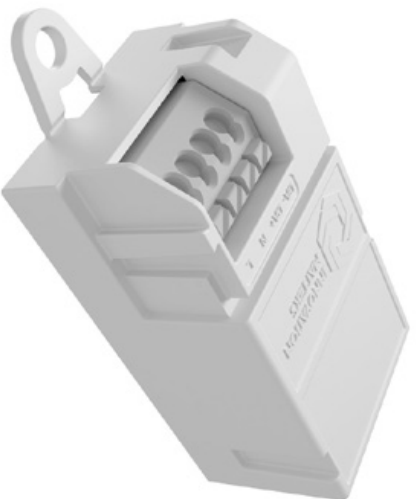


L'installazione e la messa in funzione del sistema di illuminazione devono essere eseguite esclusivamente da personale specializzato e autorizzato, tenendo conto delle presenti istruzioni per l'installazione, delle norme di sicurezza e di tutte le norme e i regolamenti applicabili al rispettivo settore di applicazione. Il produttore non si assume alcuna responsabilità per i danni causati da un'installazione o una messa in funzione non corretta. L'area di applicazione prevista e il tipo di installazione del sistema di illuminazione devono essere rispettati in base alle specifiche. Dopo l'installazione, verificare che il sistema di illuminazione sia fissato saldamente. Disattivare sempre la tensione di rete prima di sostituire gli apparecchi e prima di eseguire qualsiasi altro intervento sull'apparecchio (ad esempio, la pulizia). Per la pulizia degli apparecchi è possibile utilizzare un panno morbido (ad es. un panno in microfibra). Evitare il contatto diretto con la superficie di emissione della luce LED durante gli interventi sull'apparecchio. In caso di successive modifiche o trasformazioni dell'apparecchio, Bruck GmbH & Co. KG non si assume alcuna responsabilità per il prodotto e comporta la perdita del diritto di garanzia nei confronti del produttore. Bruck GmbH & Co. KG non si assume alcuna responsabilità per eventuali errori o refusi di stampa. Ci riserviamo il diritto di apportare modifiche ai nostri prodotti in qualsiasi momento. I dati aggiornati sono disponibili in qualsiasi momento sul sito www.bruck.de. Conservare queste istruzioni di montaggio in un luogo sicuro per i lavori di manutenzione!



M2D Bridge VL.O

Matter to DALI Bridge - Broadcast



Product description

- Matter to DALI Bridge
- Wireless controllable with Matter controller
- Connection over IPV6 WLAN network
- Integrated DALI power supply for max. 8 DALI-Drivers
- Broadcast Control of Standard and TW(DT8) DALI-Drivers
- ENEC, UL and Matter certified



*details on page 8.

innovation matters iot GmbH
Grabenweg 68 - H11
6020 Innsbruck | Austria

datasheet 0001-003
www.innovation-matters.at

M2D Bridge VI.O

Matter to DALI Bridge - Broadcast



Technical data

Rated supply voltage	110V - 240 V
Mains frequency	50/60 Hz
Max. power input	1.5 W
Connectivity standards	Matter
WLAN frequency	2.4 - 2.5 GHz
Max. output power (E.I.R.P.) 802.11 b WIFI 802.11 g/n WIFI	< +18.22 dBm < +19.99 dBm
Output	DALI (compatible)
Number of DALI addresses	Broadcast - no addressing
Guaranteed output current, DALI	16 mA - max. 8 loads
Max. output current, DALI	50 mA
Max. DALI wiring length	10 m at 1 mm ²
Ambient temperature ta	-20 ... +60 °C
Max. casing temperature tc	80 °C
Dimensions L x B x H	74 x 30 x 21 mm
Wire gauge	0.2 ... 1.5 mm / 24 ... 16 AWG
Article number	0001
Lifetime	up to 50000 h
Article number	0001

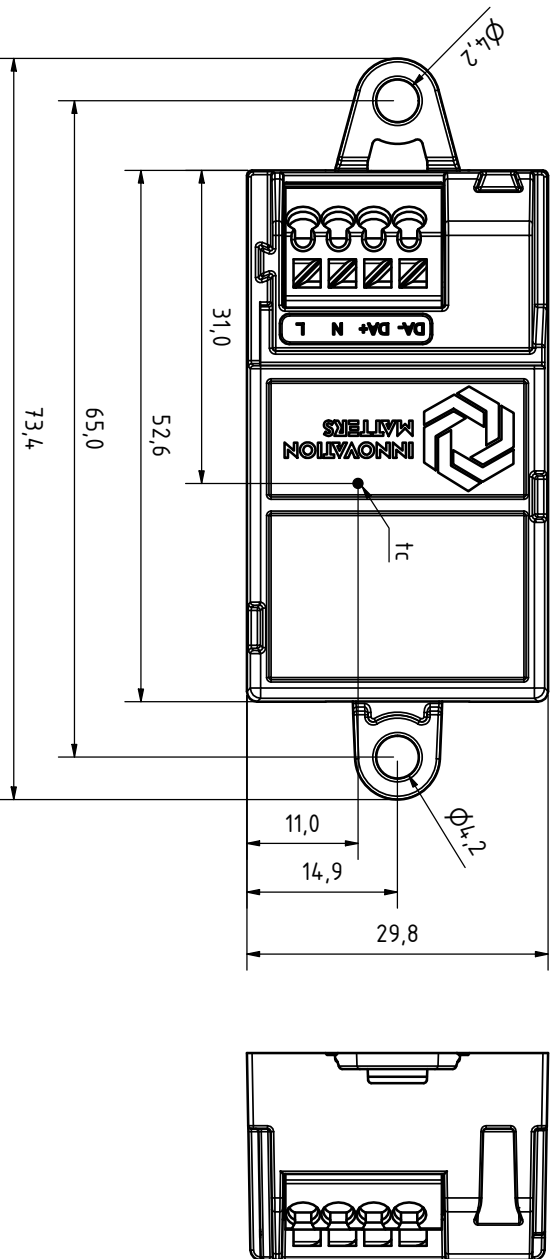
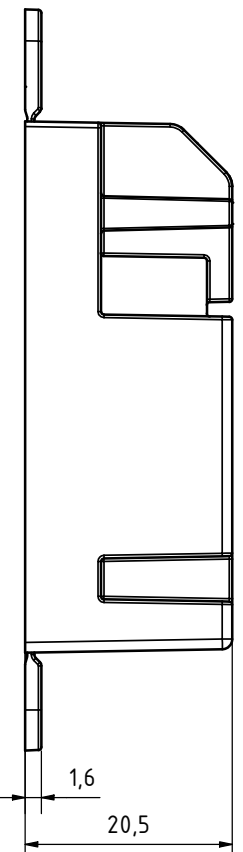
M2D Bridge VI.O

Matter to DALI Bridge - Broadcast



Details

Dimensions [mm]



M2D Bridge V1.0

Matter to DALI Bridge - Broadcast



Description

The Matter to DALI (M2D) Bridge is an interface between the Matter and DALI standard. The bridge has an integrated DALI supply, which means that a separate supply is not needed. The output supplies a guaranteed output current for up to 8 DALI drivers.

In addition to standard LED drivers, Tunable White (TW) LED drivers can also be controlled.

Commissioning

A factory new Matter to DALI Bridge will let connected luminaires fade between on and off for the first 15 seconds after booting (a “breathing” effect). This indicates that the device is ready to be commissioned by a Matter controller.

Note: The device will stop advertising itself after 15 minutes without a connection attempt. Restart the device to be able to commission the device again for 15 minutes.

To commission the device with a Matter controller the QR-code, printed on the device and supplied in the packaging, must be scanned. Alternatively, it is possible to use a setup code also printed on the device.

Controllers provide means to either scan the QR-code or to enter the setup code.

After the commissioning process is finished, the device will appear in the user interface of the controller used to commission it and is ready to be controlled.

List of certified Matter controllers: [connectivity standards alliance](#)

Commissioning to another Matter controller

The Matter controller, used to first commission the device, can open a commissioning window on already commissioned devices. Use this functionality to put the device into pairing mode, a setup code will be displayed in the app used to perform these steps.

This setup code can be used to connect to the device from a second controller in the same way the setup code can be used to initially commission the device. Afterwards the device can be controlled from both connected controllers.

Note: The setup code displayed on the app used to first commission the device is different from the one printed on the device. To add the device to a second controller it is necessary to use the setup code displayed in the app.

Factory reset

To perform a factory reset of a commissioned Matter to DALI Bridge the user must power cycle the device (i.e., turn the device on and off) 11 times in a row. It is irrelevant how long the device is off, not supplied with power, however it is important to not let the device be on for less than 2 seconds and more than 10 seconds. If the device was on for more than 10 seconds during this process the factory reset is aborted and the 11 power cycles must be started from the beginning.

After that the device will fade the connected luminaires again between on and off for 15 seconds. The device will be on and dimmed to the maximum value afterwards. All settings will be lost, and the device is ready to be commissioned again.

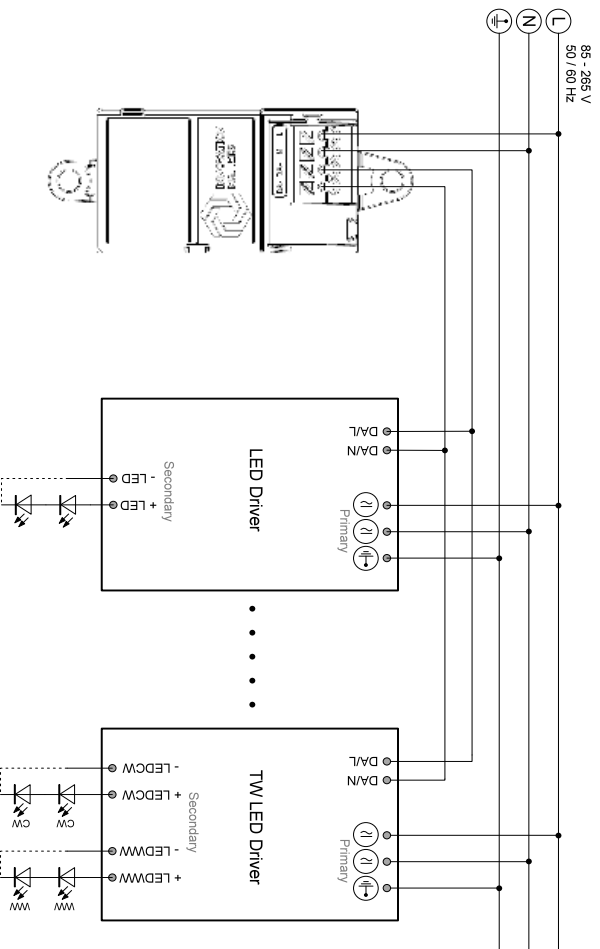
M2D Bridge VI.O

Matter to DALI Bridge - Broadcast



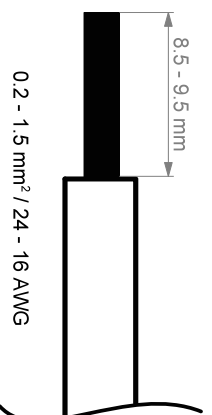
Installation

Wiring diagram



Cross section and wire types:

For the wiring between the M2D Bridge and the LED drivers, solid wires as well as stranded wires can be used.
The recommended cross-sections and dimensions of the stripping of the insulation are shown in the figure below. The suggested wire size is from min. 0.2 mm² to max. 1.5 mm² or 24AWG to 16AWG.



If the external flexible cable or cord of the luminaire/driver is damaged, it shall be exclusively replaced by the manufacturer or his service agent or a similar qualified person in order to avoid hazards.

M2D Bridge VI.O

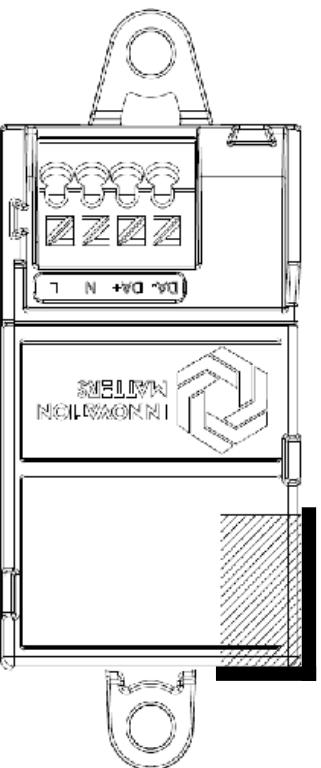
Matter to DALI Bridge - Broadcast



Device placement

The M2D Bridge has an integrated WiFi antenna (2.4 GHz), with an omnidirectional radiation pattern. To achieve the best communication performance, there should be no metallic objects or surfaces in the immediate area of the antenna.

To improve the operating range, the marked area should ideally not be in contact with a metallic surface. In general, the M2D Bridge must not be installed in a fully closed metallic housing. The environmental parameters (e.g. building construction, obstacles such as furniture, ...) are important for the maximum operating range. The optimal alignment and position of the M2D Bridge should be tested during installation.



Antenna position



Avoid metal contact on the surface

Mounting

Maximum tightening torque: 1 Nm

Standards

EN 61347-1
EN 61347-2-11
UL 8750, 2nd Edition

Certification marks

ENEC:
UL Recognized Component:
Matter:

ENEC-04518
E530583
[CSA22001MAT40001-24](#)

innovation matters iot GmbH
Grabenweg 68 - H11
6020 Innsbruck | Austria

datasheet 0001-003
www.innovation-matters.at