

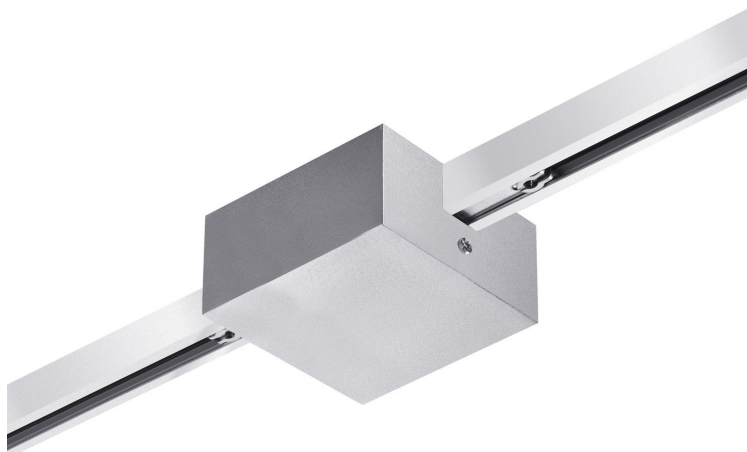
FEED DS2 C DLR

POWER FEED DS2 C DLR

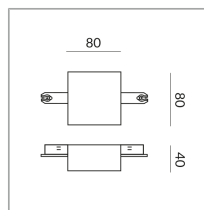
860067mcgy

Price €329.90 incl. VAT

Body Color



Specification



860067mcgy

mcgy_nl

1000 Wattage

[Installation pdf](#)

[Light data ldt/ies](#)

[3D data 3ds](#)

[5-year guarantee](#)

Incl. dual switch modul,
for switching 2 circuits
with only 1 switch

Where to buy? - [Dealer](#)

