

## POWER FEED FUNK-DIM C DLR

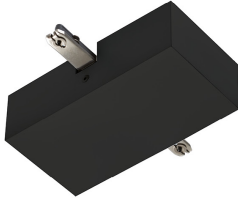
Discontinued, no longer in our catalogue. Available while stocks last.

860069sw

LED

Dimmable

€499.00



Available, delivery time: 3-5 days

---

## Technical specifications

### Body color

Painted black

### Dimmable

EnOcean-Funk Dimmung

### Safety class

1

### Ingress protection

IP20

### Weight

0.38 kg

Incl. 2 radio receivers for the dimming of 2 circuits. Automatical identification of the load (L-,C-loads). No minimum load.

### Information on operating LED lights

Thank you for choosing our LED lights.

To ensure the best possible performance and longevity of your new lighting, please observe the following instructions:

1. When operating LED lights, visible, brief changes in light may occur due to voltage changes in the mains. This does not constitute a defect in the light.
2. For dimming LED lights. Not all LED lamps are compatible with all dimmers. Please check compatibility before installation. Incompatibility does not constitute a defect in the luminaire.
3. Flickering at low dimmer settings (from 50%): When using dimmers, slight flickering may occur at low settings. This is normal behaviour and does not constitute a defect in the luminaire.

