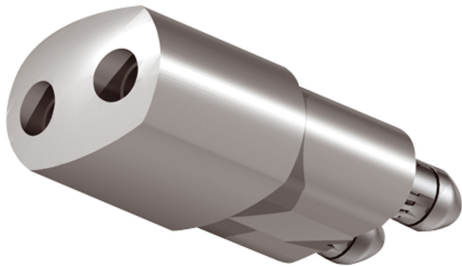


# VIA power feeds

## POWER FEED STECK END VIA



Discontinued, no longer in our catalogue. Available while stocks last.

160401mcgy

LED

€54.90

Available, delivery time: 3-5 days

### Position of power feed

At the end of track

### Variant

EINSPEISUNG STECK END VIA

### Body Color

matt chrome-plated / painted

## Technical specifications

### Body color

matt chrome-plated / painted

### Input power

300 Watt

### Safety class

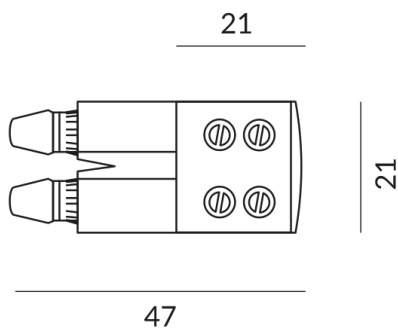
3

### Ingress protection

IP20

### Design

Martin Kania



### Information on operating LED lights

Thank you for choosing our LED lights.

To ensure the best possible performance and longevity of your new lighting, please observe the following instructions:

1. When operating LED lights, visible, brief changes in light may occur due to voltage changes in the mains. This does not constitute a defect in the light.
2. For dimming LED lights. Not all LED lamps are compatible with all dimmers. Please check compatibility before installation. Incompatibility does not constitute a defect in the luminaire.
3. Flickering at low dimmer settings (from 50%): When using dimmers, slight flickering may occur at low settings. This is normal behaviour and does not constitute a defect in the luminaire.